

CERTIFICATE OF LOCATION OF GOVERNMENT CORNER

SOUTH EAST Corner of Section 28, Township 107N, Range 39W

5th Principal Meridian, State of Minnesota, County of MURRAY

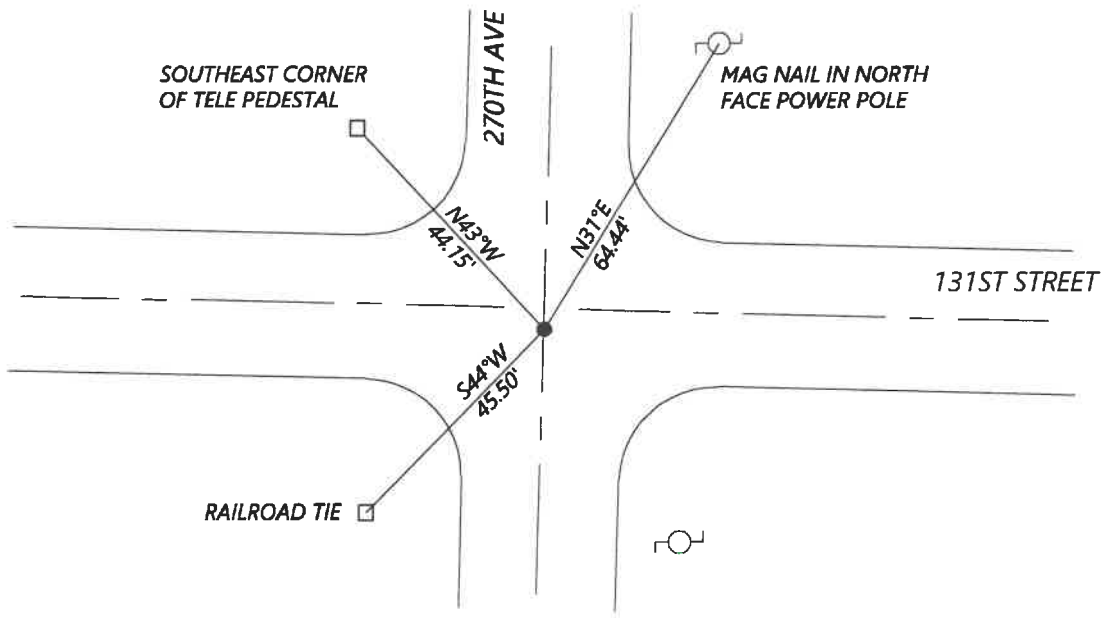
At the corner location shown on the sketch:

On 8/27/2020 found a NO. 5 REBAR WITH CAP LS23008 0.2' BELOW GRADE
DATE

left monument as found lowered monument removed monument (explain)

On _____ placed a _____
DATE

SKETCH OF REFERENCE TIES



N.T.S.

Statement of evidence for this corner location is on back of this page.

I hereby certify that this document was researched and prepared by me or under my direct supervision and that I am a licensed Land Surveyor under the laws of the State of Minnesota.

Signature [Handwritten Signature]

Date 6/16/2021 License No. 45874

Title:

- Land Surveyor Professional Engineer
- County Surveyor County Engineer

OFFICE OF THE COUNTY RECORDER

County of Murray

I hereby certify that this document was filed in the Co.

Recorder's office at _____ M. on the _____ day of _____ A.D. 20

County Recorder [Handwritten Signature: Karen Brown]

by JUN 22 2021, Deputy

DOCUMENT NO. _____

Statement of Evidence:

South East Corner of Section 28, Township 107 North, Range 39 West, 5th Principal Meridian, Murray County, Minnesota.

GLO Notes: No record found.

Nov. 1904 Survey record for section 28 shows a blue stone 10x10x16" at the corner.

Undated Survey record for section 34 shows a concrete stone at the corner.

July 2013 Corner Certificate filed by Perry Zieske shows that they dug with a backhoe and found a concrete monument. Set a $\frac{5}{8}$ " iron stake and cap LS23008 over the found concrete monument. He also lists the Murray County coordinates (2007 adj.): N: 168759.74 E: 564219.18

Sept. 2020 Westwood Professional Services searched and found a $\frac{5}{8}$ " rebar with cap LS 23008. Coordinates fit well with those from the 2013 Corner Certificate. I accepted the found monument and established reference ties.

Analysis of the recovered data, field evidence and survey measurements, indicates that the monument found is the correct perpetuation of this corner. For additional information concerning this corner please contact Westwood Professional Services.